

# FE CAPITAL UPDATE

Anna Morell  
Programme Officer  
LEP Delivery

**LONDON**  
ENTERPRISE PANEL  
MAYOR OF LONDON

# OVERVIEW

- Round 1
- Round 2
- Round 3

# ROUND 1

- **8 Signed funding agreement, 5 progressing**

College	Project	FE Capital Grant
Westminster Kingsway College	Construction	£700,000
Barnet and Southgate College	Medical science, construction and hairdressing	£6,088,438
West Thames College	Logistics, construction apprenticeships	£912,578
City of Westminster College	Pre-employment training and apprenticeships	£3,666,668
Uxbridge College	Digital skills	£196,000
Bromley College	Hospitality, food and enterprise	£850,214
South Thames College	Construction	£472,499
Richmond upon Thames	Digital media, IT, retail, finance, hospitality, creative, health and wellbeing	£18,871,800

# RICHMOND COLLEGE

A new campus for education, skills and enterprise co-locating a completely new further education facility alongside a new free school, a special needs school and a 'technology hub' operated by a global media company.



**LOND**  
ENTERPRISE

**LONDON**

# ROUND 2

- £55m confirmed
- 2 Signed funding agreement – 7 progressing

College	Project	FE Capital Grant
Fashion Retail Academy	Digital and fashion retail	£544,246
Lambeth College	Construction, STEM, English and Maths	£22,254,955



# FASHION RETAIL ACADEMY

**MAYOR OF LONDON**  
Business Hub and teaching room

# LAMBETH COLLEGE

£22.5m to create a new campus, training hotel, homes, new jobs and construction skills centre at the heart of the Vauxhall Nine Elms regeneration area.



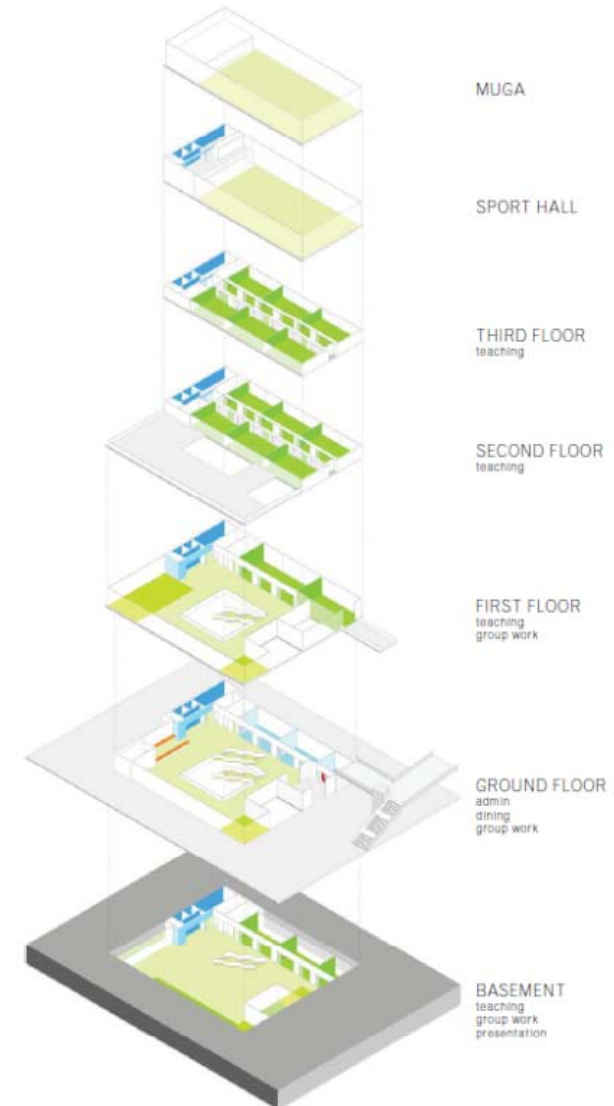
**LONDON**  
ENTERPRISE PANEL

**MAYOR OF LONDON**

# ADA, NATIONAL COLLEGE FOR DIGITAL SKILLS



£18m to develop their campus in  
Tottenham Hale





# ROUND 3

- **Growth Deal 3 - £1.8bn nationally**
- **Pipeline**
- **Round 3 Prospectus TBC**
- **Feedback**

# MORE INFORMATION

- [https://lep.london/content\\_page/fe-capital-investment-fund](https://lep.london/content_page/fe-capital-investment-fund)
- Email [fecapital@london.gov.uk](mailto:fecapital@london.gov.uk)

**ANY QUESTIONS?**

**LONDON**  
ENTERPRISE PANEL

**MAYOR OF LONDON**